

# International network of lighthouse farms:

Creating a global outdoor laboratory and classroom on sustainable foodscapes



Arni Janssen, Farm Technology Group  
Stella Juventia, MSc student Organic Agriculture  
Rogier Schulte, Farming Systems Ecology Group

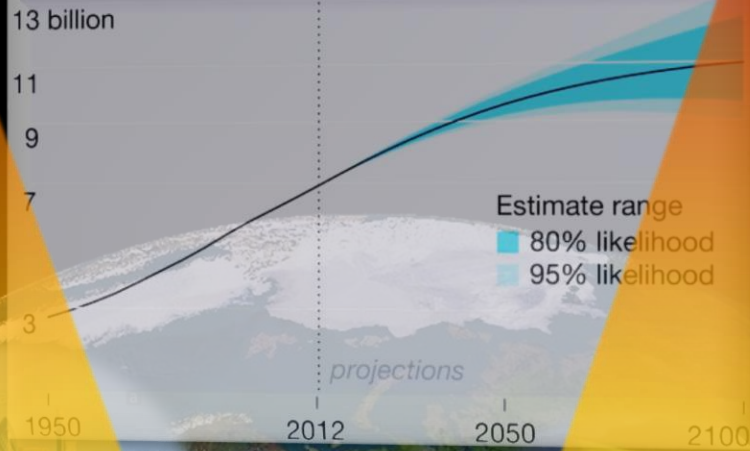
Website:





Biosphere integrity

Biochemical cycles



Climate change

Land use change

Ocean acidification





Taxation

Education

Market access

Fragmentation

Technology lock-in

Gender inequality

Regulation

Tariffs

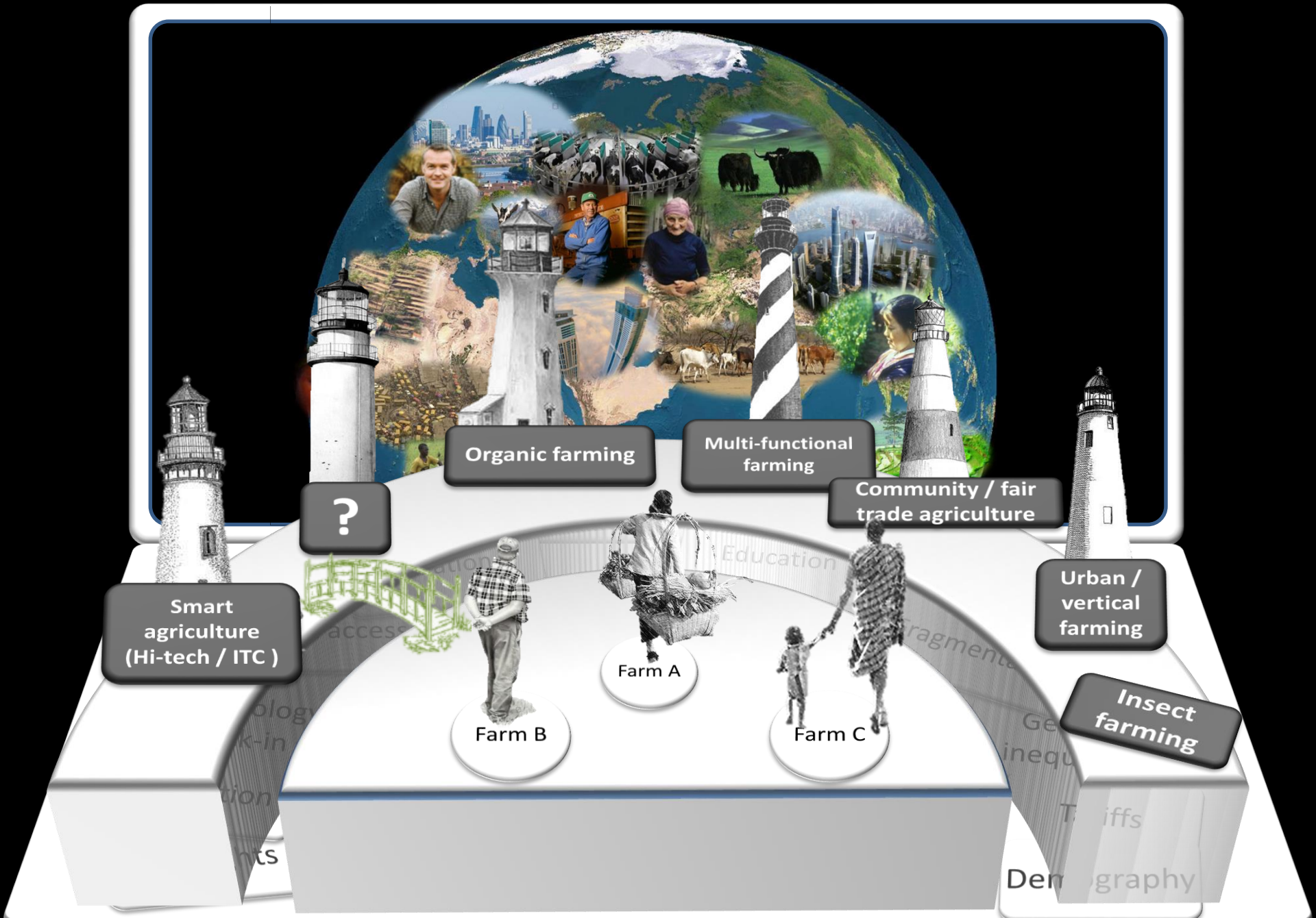
Land rights

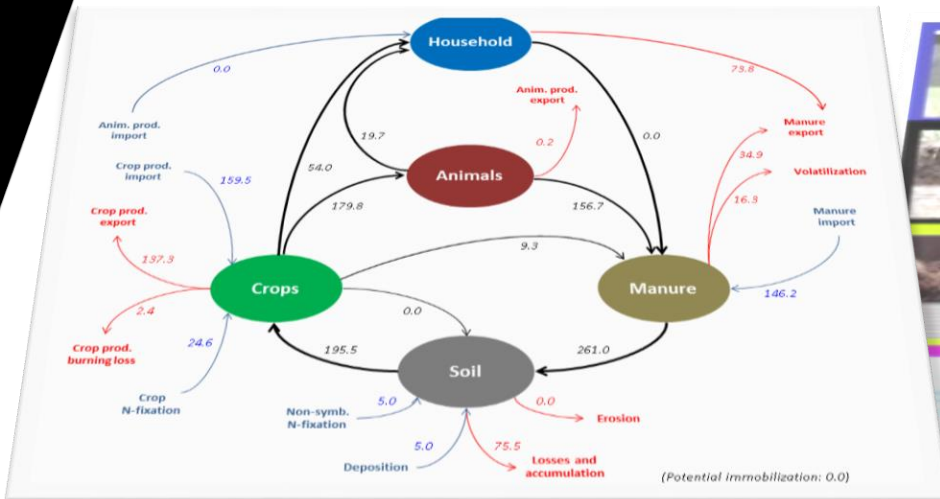
Demography

THE FOOD SYSTEM IS "LOCKED-IN"



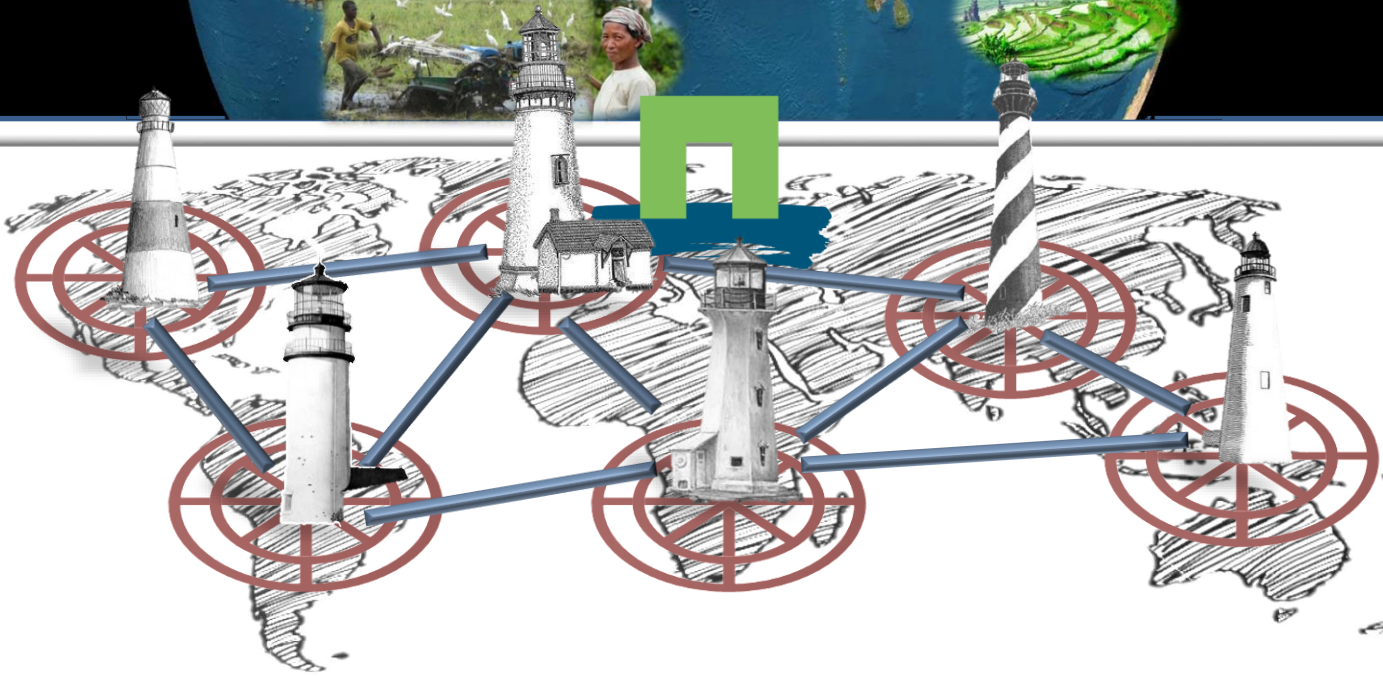
# THE 2050 HORIZON



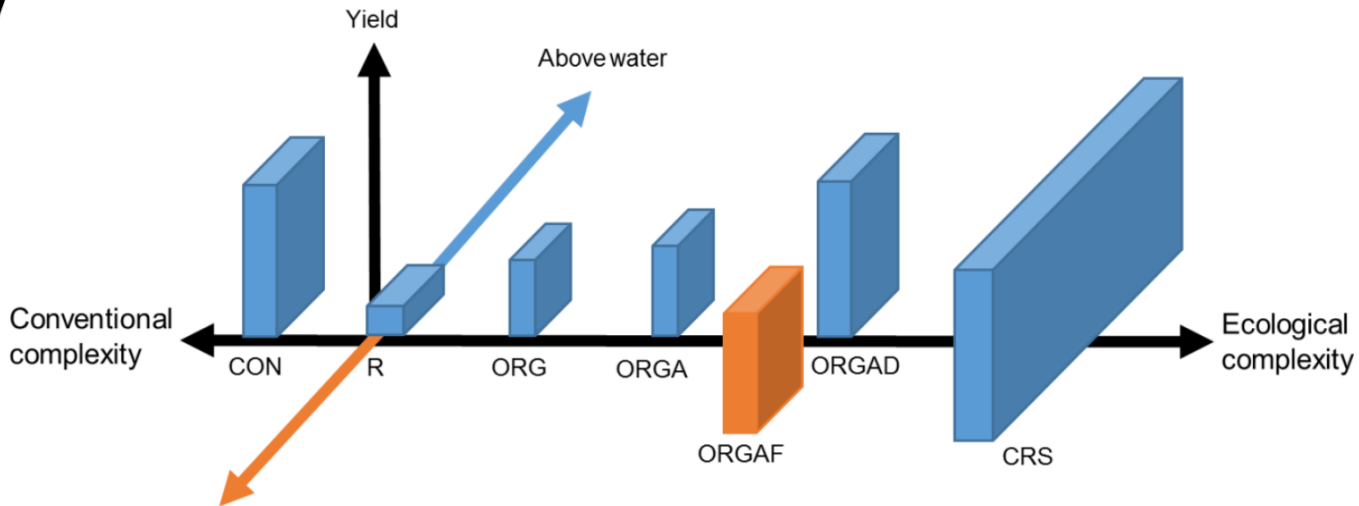


TOOLS: E.G. FARMDESIGN, FUNCTIONAL LAND MANAGEMENT





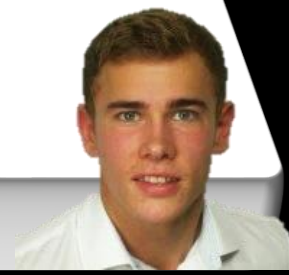
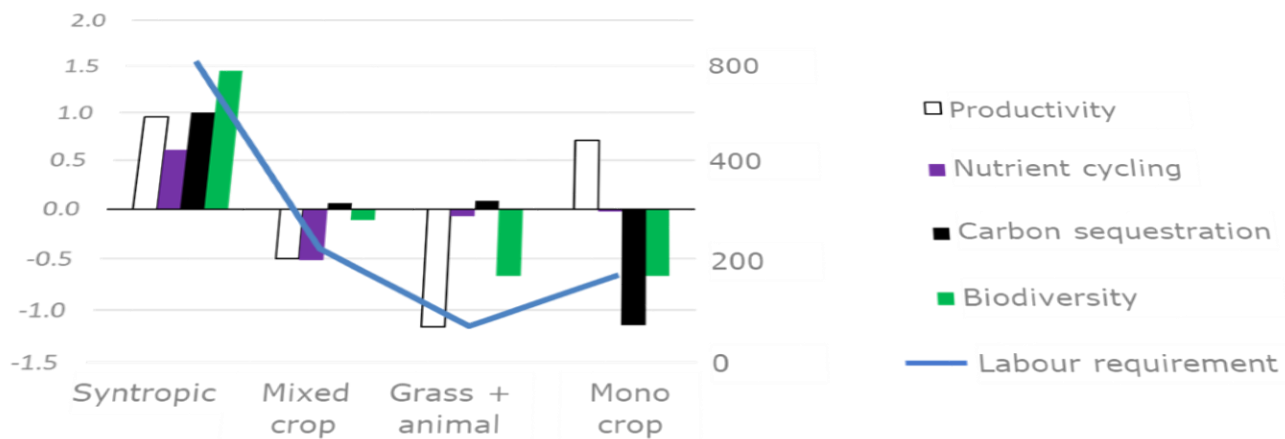
LIGHTHOUSE FARM NETWORK



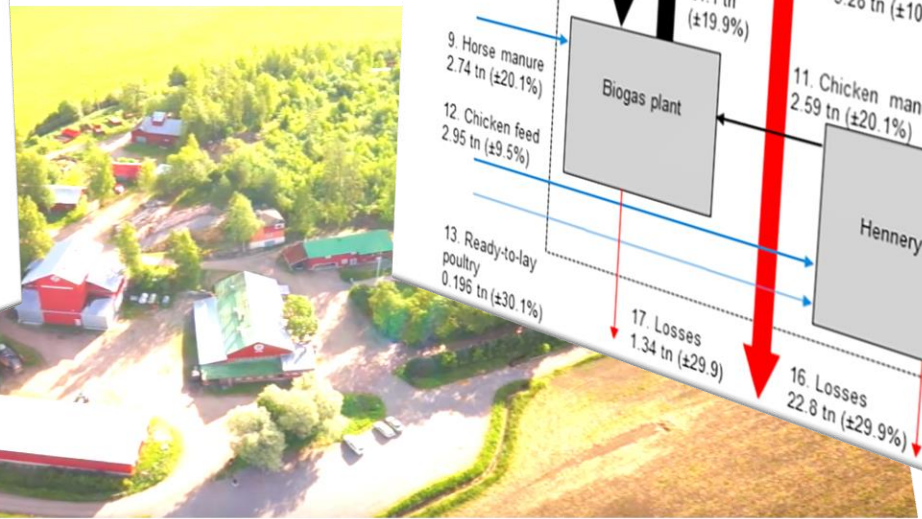
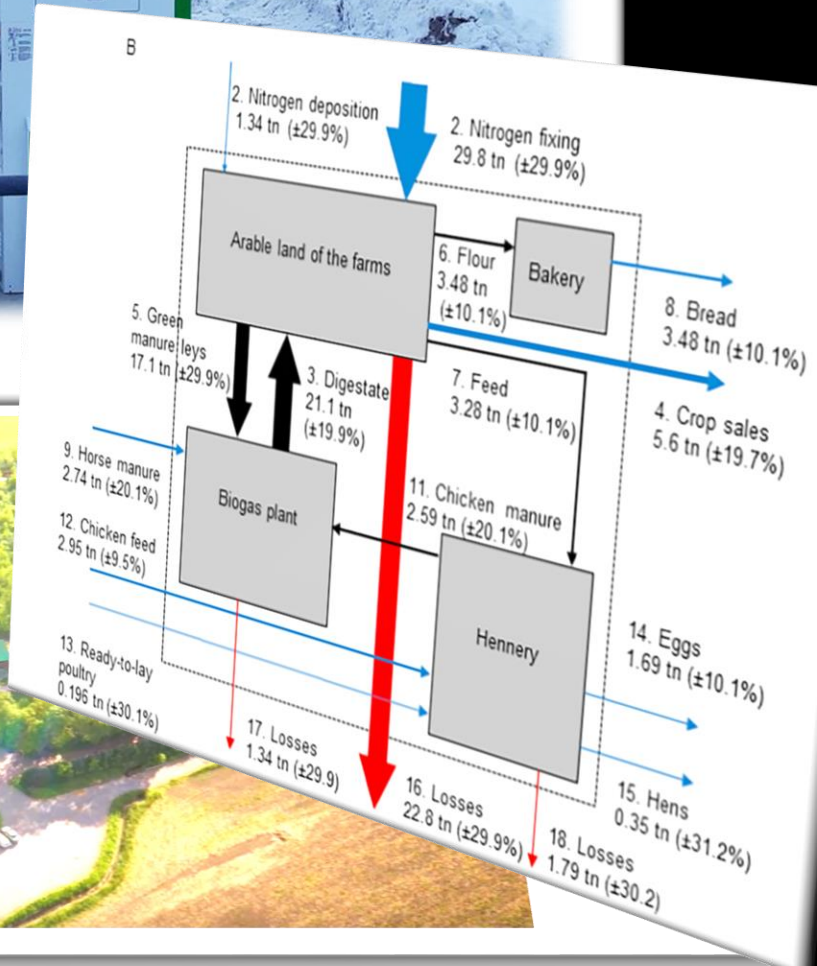
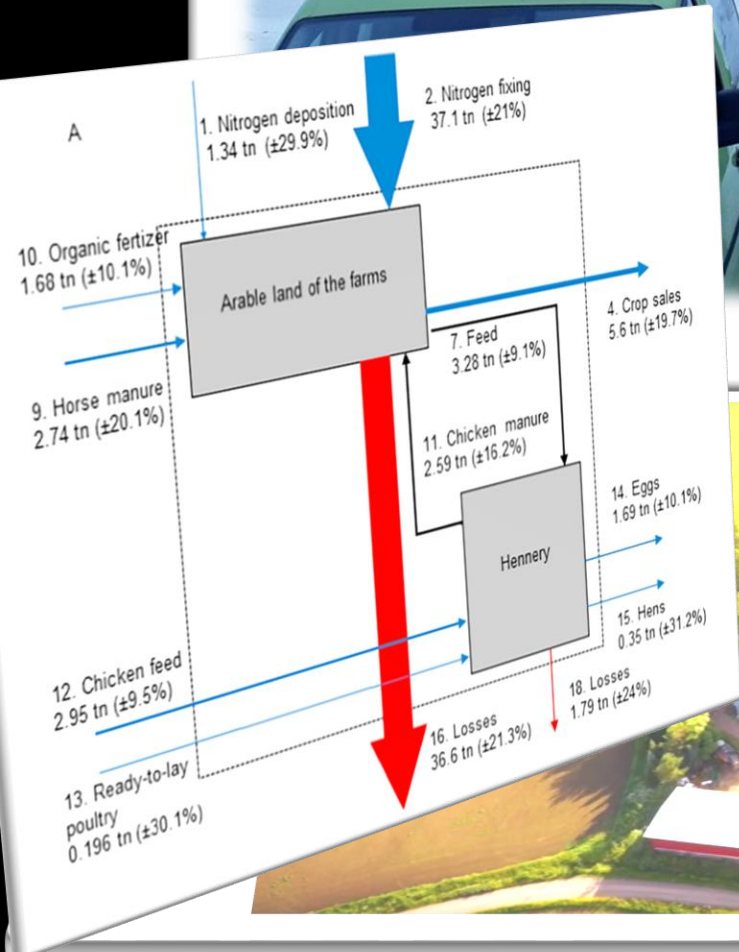
# LIGHTHOUSE FARMS: COMPLEX RICE SYSTEM, INDONESIA











LIGHTHOUSE FARMS: PALOPURO AGROECOLOGICAL SYMBIOSIS FINLAND



*Diversity = productivity + ecosystem service*  
*= higher labour + knowledge requirement*

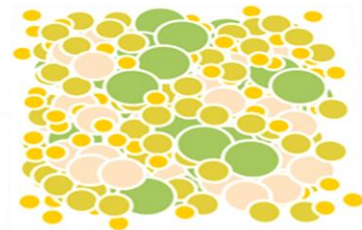
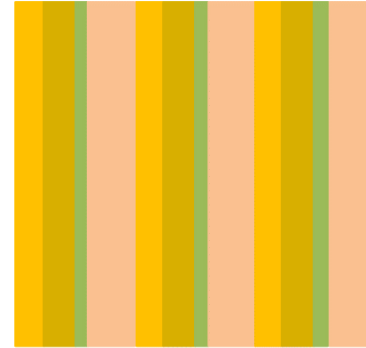




“We analyse and predict and discuss in a systematic way the potential of a technology to fulfil the needs of mankind to humankind and nature in a sustainable way” starting point.”







Technology as an enabler or facilitator







Outdoor  
Laboratory

Outdoor  
classroom



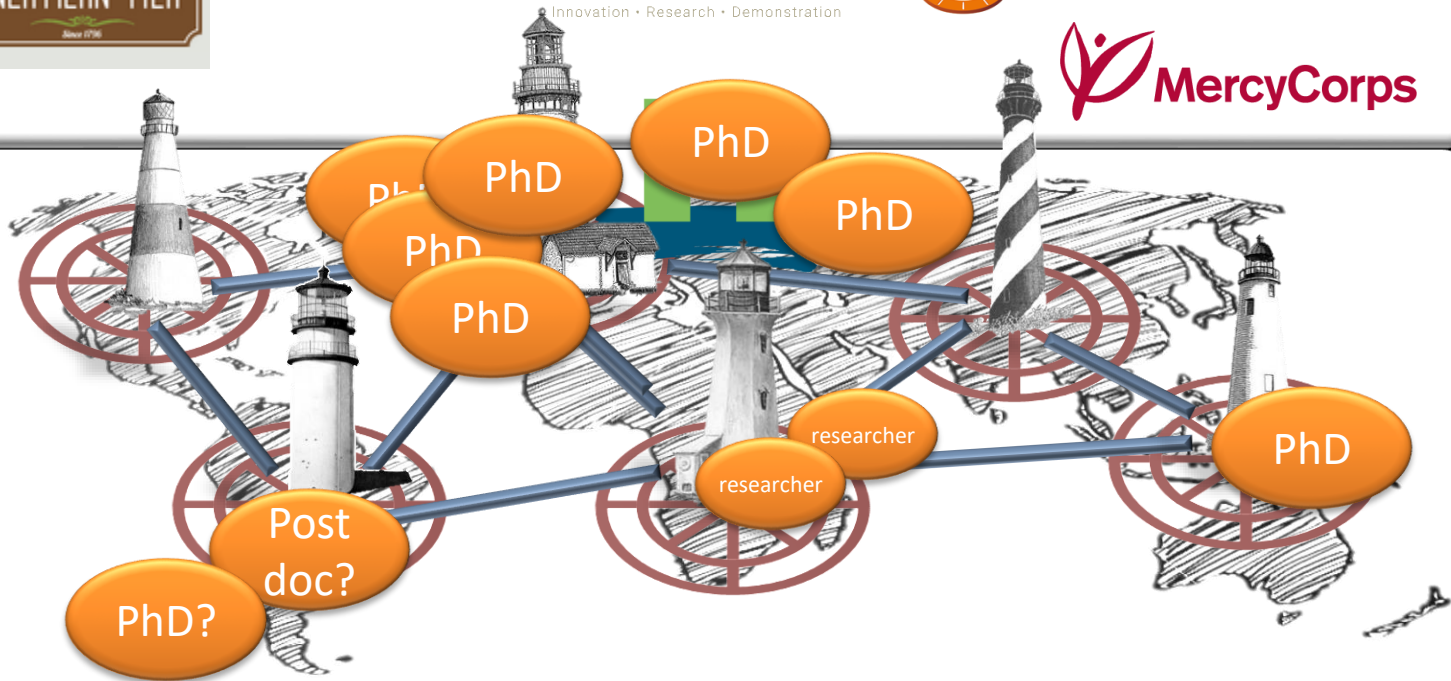
LIGHTHOUSE FARMS: BRINGING THE WORLD INTO THE CLASSROOM



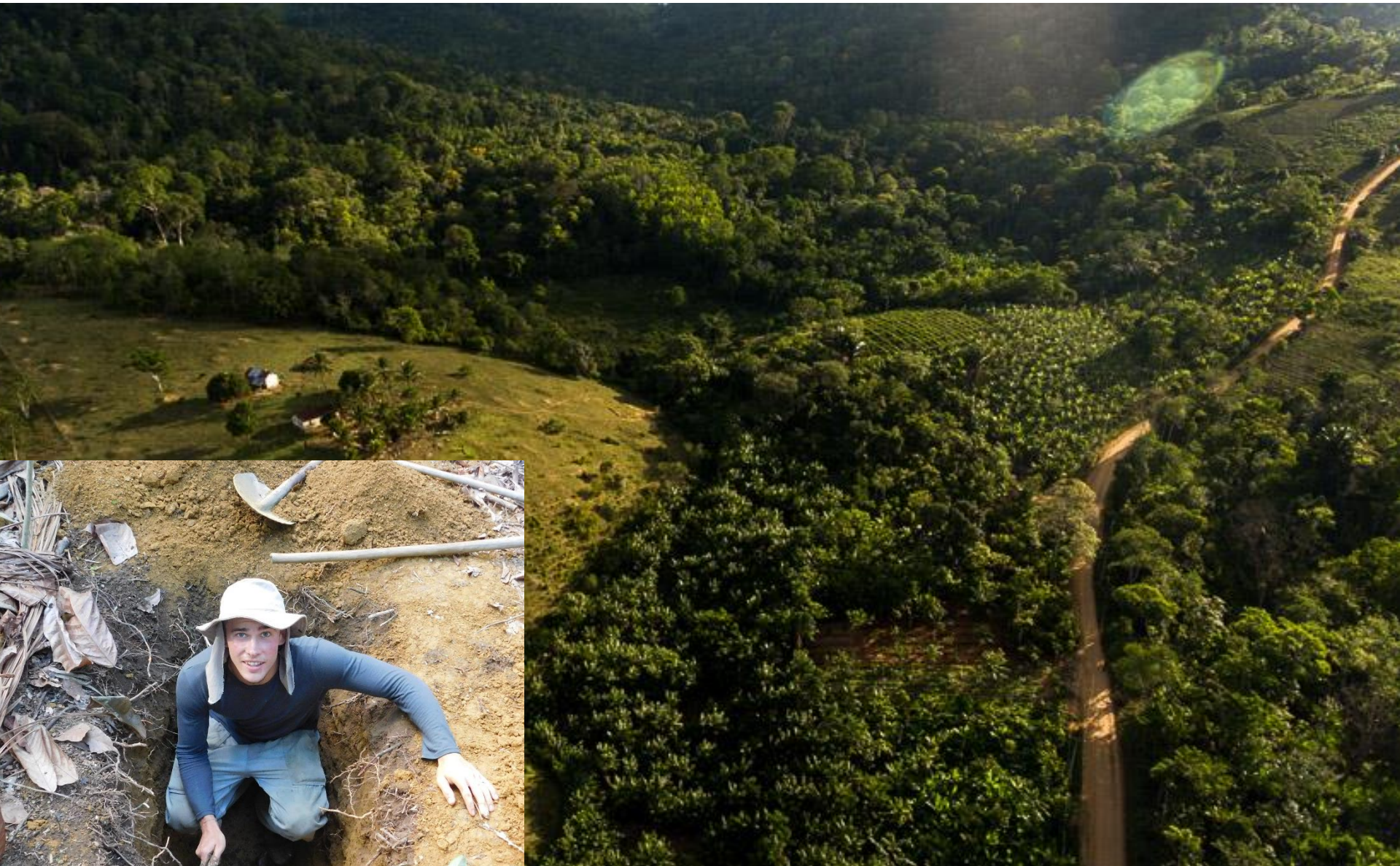
UNIVERSITY OF HELSINKI



Embassy of the Kingdom of the Netherlands











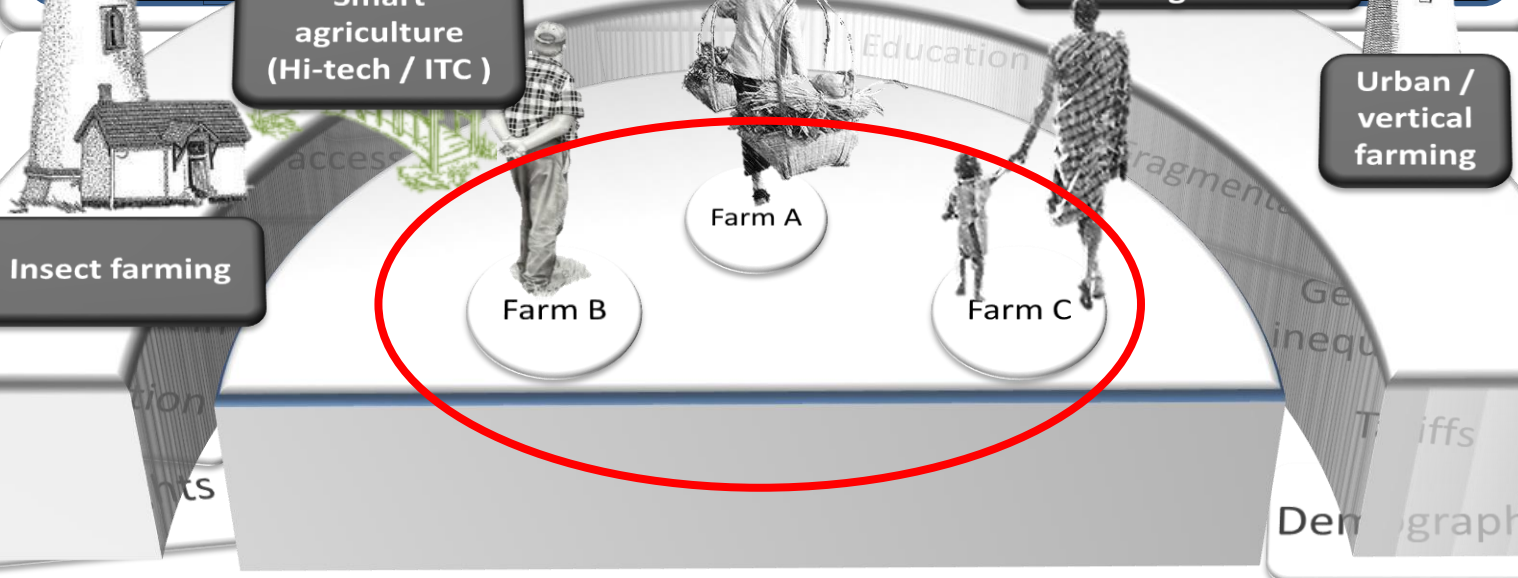




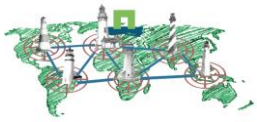








# THE 2050 HORIZON



# International network of lighthouse farms:

Creating a global outdoor laboratory and classroom on sustainable foodscapes

