

**Through Cooperation and Participation  
towards Implementation:**

**„Creating a  
Soil Protection Network  
in the Danube Region“**

*Harald Kutzenberger, International Association for Danube Research*



**International  
Association for  
Danube Research**

***Danube wide***

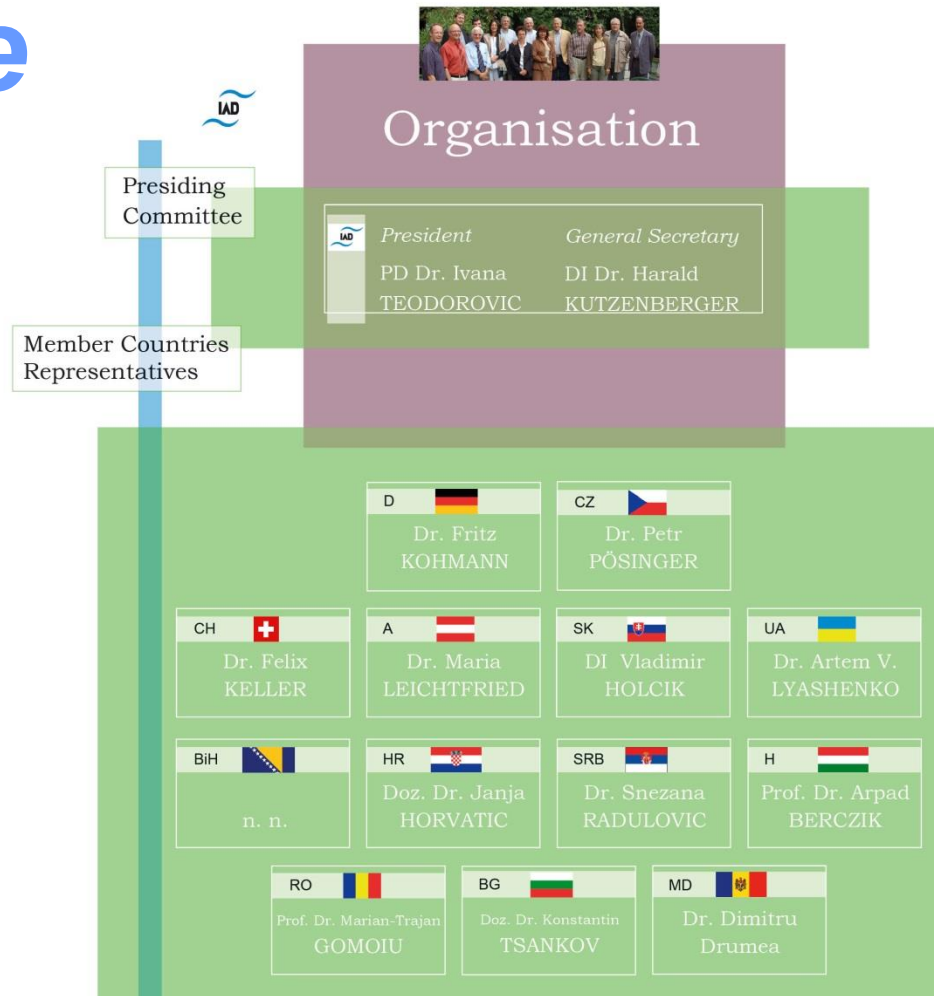
***Cooperation***

***since 1956***

**16 Countries**

**40 Conferences**

**12 Expert groups**



International Association for Danube Research

© 2015

**structural focus:**

**international network**

**political focus:**

**Scientific & NGO**

**geographical focus:**

**Danube Region**

#### LEGEND

##### Climate

- Alpine
- Mediterranean
- Continental
- Steppic

50000 0 50000 100000 150000 Meter



# *Global trends and local impacts*

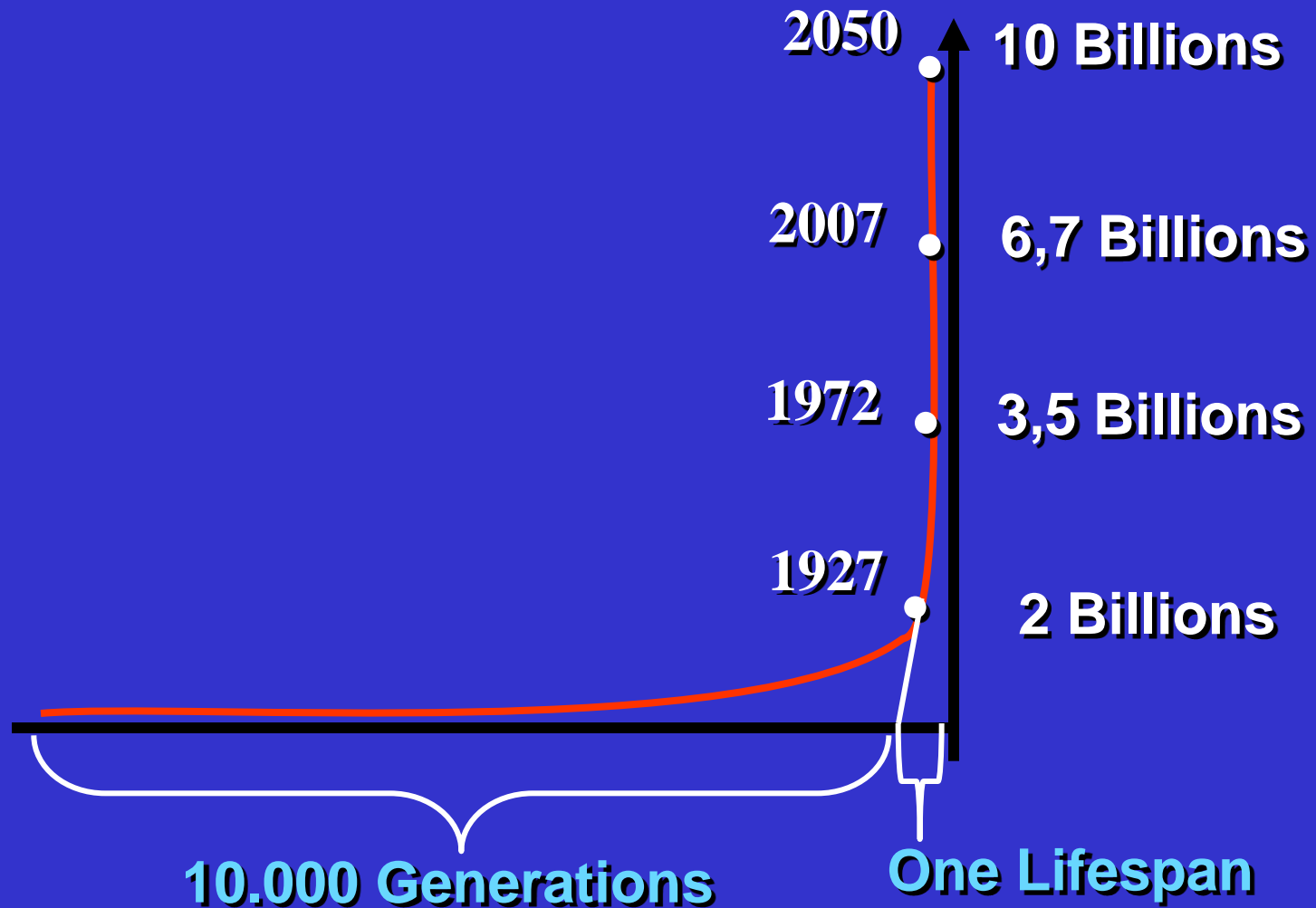


- **Environmental impacts of transport and infrastructure**
- **Economic survival of traditional rural landscapes**
- **Spatial planning and natural risks**
- **Structural changes on different levels**

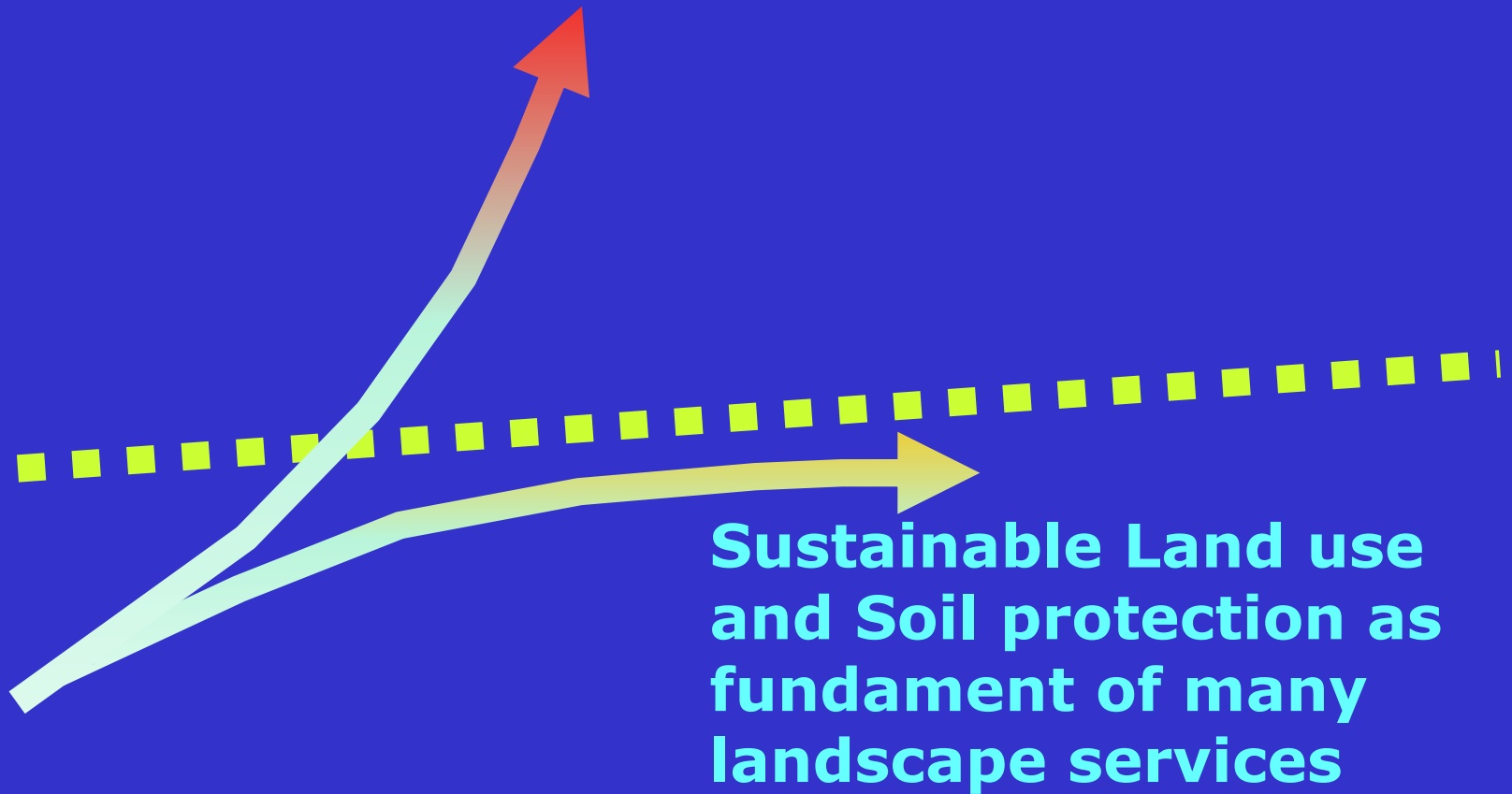


***I don't know, where I am going,  
but I will be for sure there first!***

# Exponential Growth



From **accidental** to **sustainable** development



***„Die Entwicklungsrichtung wird nicht durch Konzepte verändert, sondern durch Menschen.“***

*Ernst Ulrich von Weizsäcker*

***Capacity building in the ELSA partner municipalities***

***Motivation and implementation for soil protection***

**Modul A: Awareness raising by Soil Colours: production and creative activities**

**Modul B: Soil Ambassadors: Soil diversity and Soil Protection in practice**

**Modul C: hedgerows as wind belts: technical aspects and examples**

**Modul D: regional tree nurseries: species diversity and source populations**

**Modul E: Soil and gardening: Composting and mix-culture**

**Modul F: local adaptation of methods in soil protection and land use for ELSA partners**

**Supporting the wisdom of the local population.**