



## Summing Up and perspectives



ARBEITSGEMEINSCHAFT  
DONAULÄNDER  
PRACOVNÍ SPOLUČENSTVÍ  
PODUNÁSKÝCH ZEMÍ  
PRACOVNE SPOLOČENSTVO  
PODUNÁSKÝCH KRAJIN  
DUNAMENTI TARTÓZÁSIK  
MUNKAKÖZÖSSÉGE  
RADNA ZAJEDNICA  
PODUNAVSKIH REGIJA  
RADNA ZAJEDNICA  
PODUNAVSKIH ZEMALJA  
COMUNITATEA DE LUCRU  
A STATELOR DIN ARDE  
RABOTNA OBILHOĆ  
JUHABCKIH CTPAHH  
POBPA CIBIPCKHX KPAH



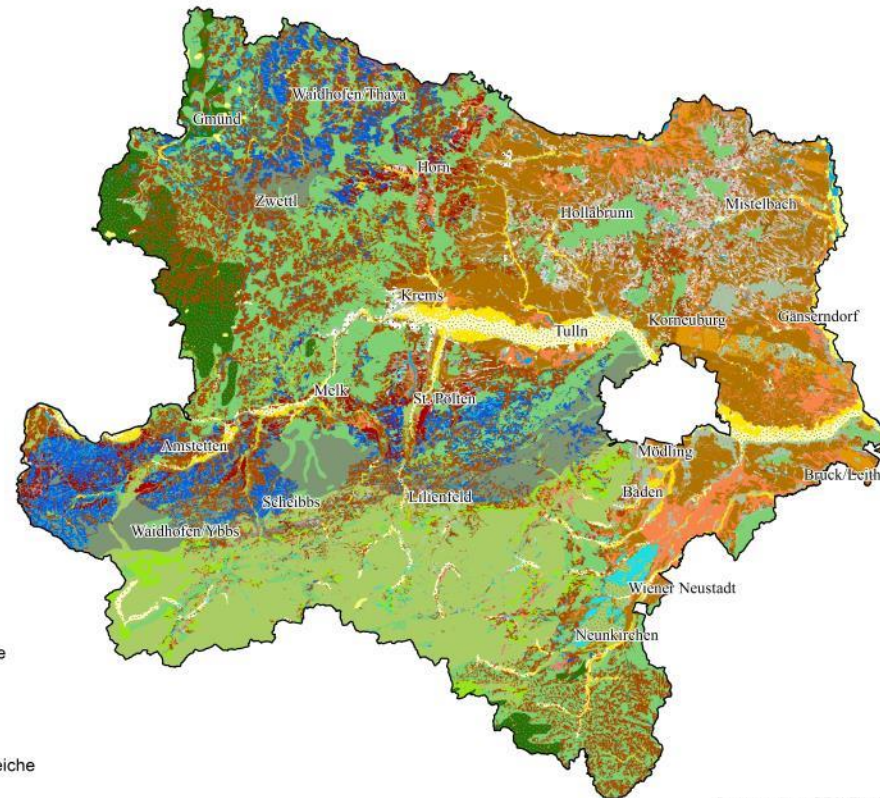


# Updating the soil map of the Danube countries at the example of Lower Austria

Landwirtschaftlich  
genutzte Böden  
Waldböden

- Rendzina
- Pararendzina
- Ranker
- Tschernosem
- Paratschernosem
- Braunerde
- Parabraunerde
- Podsol
- Semipodsol
- Kalkbraunlehm
- Kolluvisol
- Kultur-Rohboden
- Pseudogley
- Auboden
- Gleye und Moore
- Feuchtschwarzerde
- Solontschak

Sonstige  
Nicht kartierte Bereiche



Datengrundlage: BFW, Till 1937  
Inhaltliche Gestaltung:  
W. Wenzel, R. Hölzl, P. Strauss, M. Englisch, E. Herzberger, R. Reiter 2013  
Im Auftrag der niederösterreichischen Agrarbezirksbehörde  
Projektleitung: Erwin Szlezak



1:1.000.000 0 5 10 20 km



ARBEITSGEMEINSCHAFT  
DONAU-LÄNDER  
PRACOVNÉ SPOLEČENSTVO  
PODUNÁSKÝCH ZEMÍ  
PRACOVNE SPOLOČENSTVO  
PODUNÁSKÝCH KRAJIN  
DUNAVIJSKI TARTOMÁNYOK  
MUNKAKÖZÖSSÉGE  
RADNA ZAJEDNICA  
PODUNAVSKIH REGIJA  
RADNA ZAJEDNICA  
PODUNAVSKIH ZEMLJA  
COMUNITATEA DE LUCRU  
A STATELOR DIN ARDE  
PAGOTHA OBLASTI  
JYHABOKH CTPAHH  
PODUNA CIBIPI KRAJIN  
TIPULYHAK KRAJIN



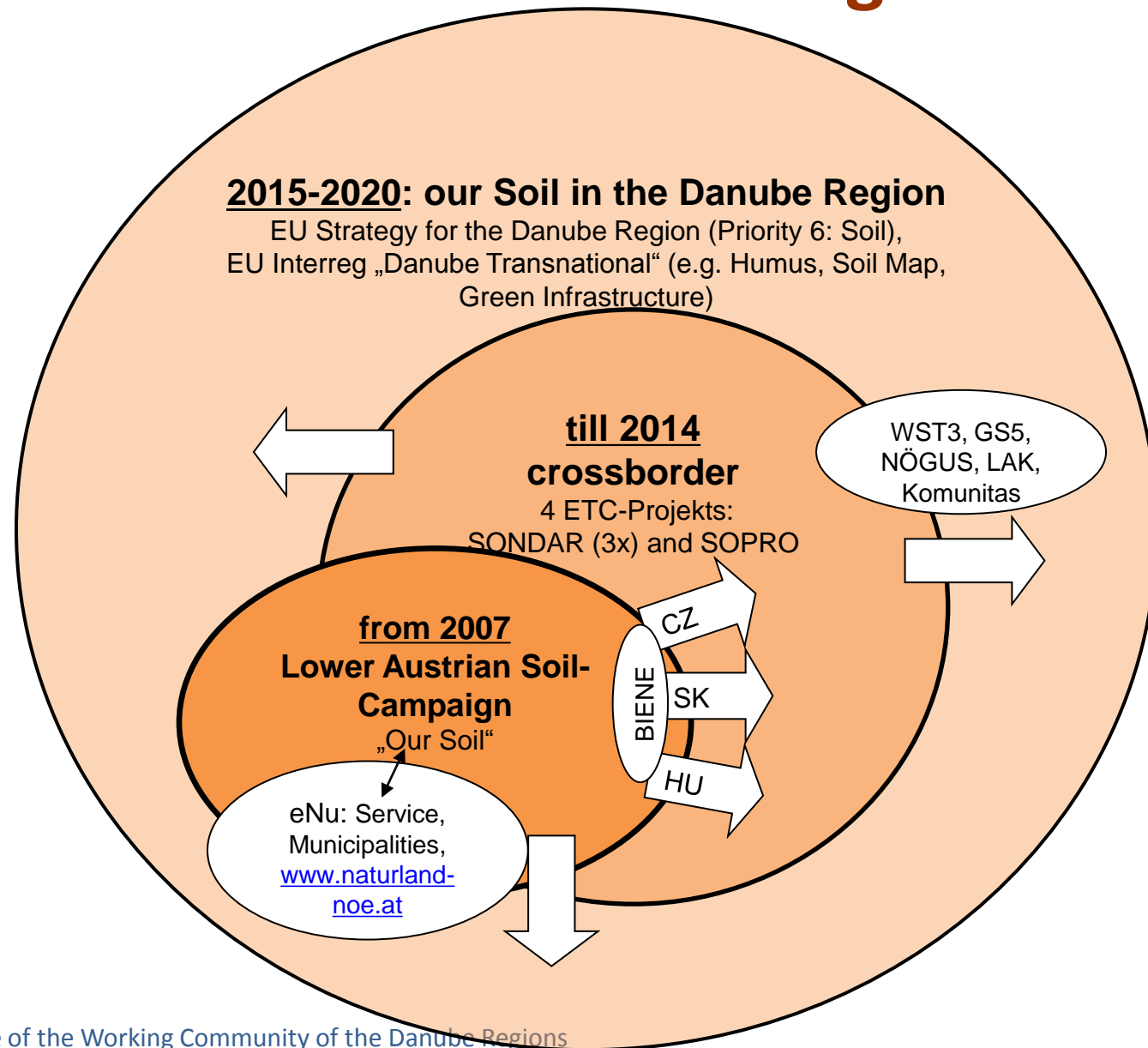
23rd Conference of the Working Community of the Danube Regions  
Tulln, 13th of April 2016  
Dr. Erwin Szlezak / DI Christian Steiner (Lower Austria)







# Our Soil in the Danube Region



ARBEITSGEMEINSCHAFT  
DONAU-LÄNDER  
PRACUJNÍ SPOLUPRÁCE  
PODUNÁSKÝCH ZEMÍ  
PRACOVNÉ SPOLOČENSTVO  
PODUNÁSKÝCH KRAJIN  
DUNARENTE TARTOMÁNYOK  
MUNKAKÖZÖSSÉGE  
RADNA ZAJEDNICA  
PODUNAVSKIH REGIJA  
RADNA ZAJEDNICA  
PODUNAVSKIH ZEMLJA  
COMUNITATEA DE LUCRU  
A STATELOR DIN ARDE  
RABOTHA ORSHOOST  
ДУНАВСКИ СЪПРАНИ  
РАБОВНА СЪПРАНИ  
ДУНАВСКИХ КРАИ



# Soil Strategy Network in the Danube Region

3 ETC-Projekts between Lower Austria with SK, HU, CZ

**Soil awareness**  
Sensibly use, carefully protect our soil



[www.sondar.eu](http://www.sondar.eu)

in execution:



Soil as an indicator of flood  
occurrences

in execution:



Soil as a filter for pollutants /  
soil as a reservoir for carbon

scheduled:



Improving quality of soil by  
raising soil awareness/  
soil as an archive



ARBEITSGEMEINSCHAFT  
DONAULÄNDER  
PRACOVNÍ SPOLUPRÁCE  
PODUNÁSKÝCH ZEMÍ  
PRACOVNÉ SPOLOČENSTVO  
PODUNÁSKÝCH KRAJIN  
DUNÁNTARTOMÁNYOK  
MUNKAKÖZÖSSÉGE  
RADNA ZAJEDNICA  
PODUNAVSKIH REGIJA  
RADNA ZAJEDNICA  
PODUNAVSKIH ZEMLJA  
COMUNITATEA DE LUCRU  
A STATULOR DIN ARDE  
РАБОТНА ОБИДНОСТ  
ДУНАВСКИ СТРАНИ  
РОБІТНА СПІВРІСНІСТЬ  
ПІДПІСНІСТЬ КРАІН







# Soil Protection in Lower Austria

## New Plantings

- about 30 hectares per year
- about 80% of new installations
- about 20% Re-greening of old facilities

## Care Measures

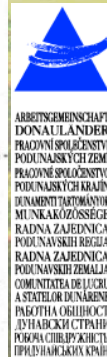
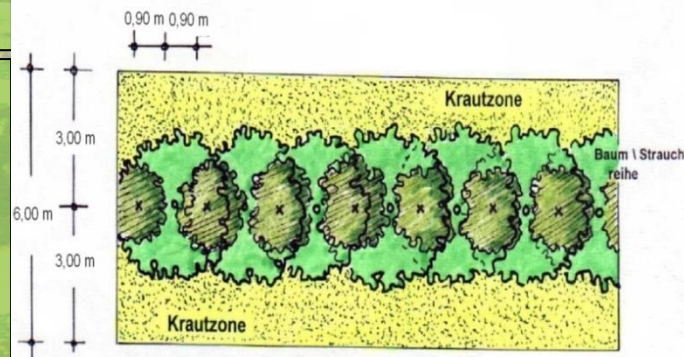
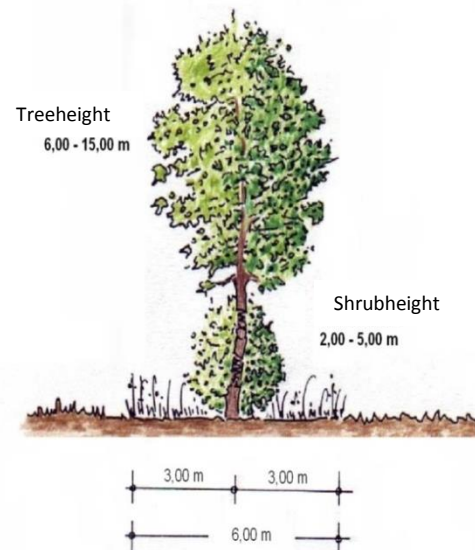
- about 900 greeneries
- on 150 hectares (3 Operations per year)
- in 120 cadastral municipalities

## Total Stock (since 1958)

- about 3.000 hectares

## Plant requirements per year

- an average of 20.000 trees
- an average of 80.000 shrubs
- mainly produced in our own tree nursery
- from regional seed – gained in Lower Austria





# Current Projects

## SONDAR+ Start

## goodworks AT-HU-RO

1. SONDAR+ (Soil and Sustainable Operations Network in the Danube Region)
  - Partnerstructure:
    - LP – BIENE – AT
    - PP – NPPC – SK
    - PP – Czech Technical University - CZ
    - PP – LandisWater – AT
  - Goal: Preparing and Submitting a transnational Project SONDAR+
2. goodworks AT-HU-RO
  - Partnerstructure:
    - LP – goodworks Innovation Agency – AT
    - PP – AUR – RO
    - PP – LEED Nonprofit – HU
  - Goal: Building Up and developing the goodworks Network in Romania



ARBEITSGEMEINSCHAFT  
DONAU-LÄNDER  
PRACOVNÍ SPOLUČENSTVÍ  
PODUNÁSKÝCH ZEMÍ  
PRACOVNÉ SPOLOČENSTVO  
PODUNÁSKÝCH KRAJIN  
DUNARENTE TARTOMÁNYOK  
MUNKAKÖZÖSSÉGE  
RADNA ZAJEDNICA  
PODUNAVSKIH REGIJA  
RADNA ZAJEDNICA  
PODUNAVSKIH ZEMLJA  
COMUNITATEA DE LUCRU  
A STATELOR DIN ARDE  
РАБОТНО ОБЩНОСТ  
ДУНАВСКИХ СТРАН  
RODNOVA SPOLEČENSTVÍ  
PODUNÁSKÝCH KRAJIN



# Planned Project SONDAR+

## Soil- and Sustainable Operations Network in the Danube Region provides

- Transnationally harmonised soil information to preserve natural&cultural heritage and ecosystem functions for all stakeholders.
- Training, Tools and Know-How-Stations for soil protection to preserve biodiversity, organic matter, erosion.
- several 100 ha of land will be sheltered and used by soil preservation plants
- Soil & Sustainability Ambassador programme
- Soilartcampaign "with the colours of the earth" for schools, artists, municipalities
- Best Practice examples
- green jobs



ARBEITSGEMEINSCHAFT  
DONAU-LÄNDER  
PRACOVNÍ SPOLUČENSTVÍ  
PODUNAVSKÝCH ZEMÍ  
PRACOVNE SPOLOČENSTVO  
PODUNAVSKÝCH KRAJIN  
DUNARENTEITGEMEINSCHAFT  
MUNKAKÖZÖSSÉG  
RADNA ZAJEDNICA  
PODUNAVSKIH REGIJA  
RADNA ZAJEDNICA  
PODUNAVSKIH ZEMLJA  
COMUNITATEA DE LUCRU  
A STATELOR DUNĂRENI  
РАБОТНА ОБЩНОСТ  
ДУНАВСКИХ СТРАН  
ROGÓVA CSÖBÉRSZEGSÉG  
TRPILNÍ HANOVSKÝ KRAJ



# Planed SONDAR+ Partnerstructure

## Project partners:

- PP1: LASWA Land is Water (AT)
- PP2: BFA Bio Research Austria (AT)
- PP3: Land to the people (SK)
- PP4: NAFC National Agriculture and Food Centre Lužianky Soil Science and Conservation Research Institute Bratislava (SK)
- PP5: AUR National Association of Human Resources Specialists (RO)
- PP6: CTU Czech Technical University in Prague (CZ)
- PP7: Mikroregion Hornacko (CZ)
- PP8: Mikroregion Strážnicko (CZ)
- PP9: University of Westhungary (HU)
- PP10: Leed non profit kft (HU)
- PP11: Act Group(CRO)

## Strategic Partners:

- SP1: Working Group of the Danube Countries (AT)
- SP2: Austrian Chamber of Agriculture (AT)
- SP3: European Land and Soil Alliance (AT)
- SP4: International Organisation for Migration (AT)
- SP5: ICA Regional Network for Central and South Eastern Europe (AT)
- SP6: goodworks Innovation Agency EWIV (AT)
- SP7: Faculty of Horticulture, Mendel University Brno (CZ)
- SP8: University of Natural Resources and Life Sciences, Vienna (AT)
- SP9: The Romanian Anti-Poverty and Social Inclusion Network (RO)
- SP10: European Network of Cities and Regions for the Social Economy (BE)
- SP11: European Social Franchising Network (SE)
- SP12: NÖGUS - Lower Austrian Health & Social Fund (AT)



ARBEITSGEMEINSCHAFT  
DANUBIALÄNDER  
PRACOVNÍ SPOLEČENSTVÍ  
PODUNÁSKÝCH ZEMÍ  
PRACOVNE SPOLOČENSTVO  
PODUNÁSKÝCH KRAJIN  
DUNARENȚIȚĂRIMANȘOR  
MUNKAKÖZÖSSÉGE  
RADNA ZAJEDNICA  
PODUNAVSKIH REGIJA  
RADNA ZAJEDNICA  
PODUNAVSKIH ZEMALJA  
COMUNITATEA DE LUCRU  
A STATELOR DUNĂRENE  
РАБОТНА ОБЩНОСТ  
ДУНАВСКИХ СТРАН  
РОБОВА СПОЛЧЕЖИЦЬ  
ПІДЛІДНІВСЬКИХ КРАЇН





# Planed SONDAR+ Workinpackages

## **WP1 – Project management**

## **WP2 – Communication activities**

## **WP3 – Soil Functions Map**

To propose suitable measures and strategies to maintain soil functions/ harmonized & detailed soil info for the project area is needed.

## **WP4 – Humus & Bio Fertilizer**

Aim is to establish biocorridors, which fulfil also other important functions in agricultural landscapes.

## **WP5 – Our Region feeds the world**

Several 100 of ha land will be sheltered and used by soil preservation plants which will be realized as multifunctional landscape elements in the danube region in order to strengthen the bio-corridor SOIL.

## **WP6 – Sustainable Network**

SONDAR+ network activities provide bestpractice in restoring biodiversity for 10.000 stakeholder & foster the inclusion of vulnerable groups



ARBEITSGEMEINSCHAFT  
DONAU-LÄNDER  
PRACOVNÍ SPOLUČENSTVÍ  
PODUNÁSKÝCH ZEMÍ  
PRACOVNE SPOLOČENSTVO  
PODUNÁSKÝCH KRAJIN  
DUNARENTE TARTOMÁNYOK  
MUNKAKÖZÖSSÉGE  
RADNA ZAJEDNICA  
PODUNAVSKIH REGIJA  
RADNA ZAJEDNICA  
PODUNAVSKIH ZEMLJA  
COMUNITATEA DE LUCRU  
A STATELOR DIN ARDE  
РАБОТНА ОБИДНОСТ  
ДУНАВСКИХ СТРАНИ  
РАБОЧА СПІВРІСНІСТЬ  
ПРАЦІВНИЦЬКИХ КРАІН





Thanks for your attention

**DI Dr. Erwin Szlezak & DI Christian Steiner**

*ARGE Donauländer, AK Nachhaltigkeit – Bereich Boden  
NÖ Agrarbezirksbehörde/Fachabteilung Landentwicklung  
Landhausplatz 1, 3109 St. Pölten*

[christian.steiner@noel.gv.at](mailto:christian.steiner@noel.gv.at)

[erwin.szlezak@noel.gv.at](mailto:erwin.szlezak@noel.gv.at)

[www.unserboden.at](http://www.unserboden.at) / [www.sondar.eu](http://www.sondar.eu) / [www.soilart.eu](http://www.soilart.eu) / [www.sozialproduziert.at](http://www.sozialproduziert.at)



ARBEITSGEMEINSCHAFT  
DONAULÄNDER  
PRACOVNÍ SPOLUPRÁCE  
PODUNÁSKÝCH ZEMÍ  
PRACOVNE SPOLOČNOST'  
PODUNÁSKÝCH KRAJIN  
DUNAMENTARTOMANOK  
MUNKAKÖZÖSSÉGE  
RADNA ZAJEDNICA  
PODUNAVSKIH REGIJA  
RADNA ZAJEDNICA  
PODUNAVSKIH ZEMLJA  
COMUNITATEA DE LUCRU  
A STATIILOR DUNARENE  
РАБОТНО ОБЩНОСТ'  
ДУНАВСКИХ СТРАН  
PODUNA CIBULP KÖRLET  
TRIPUDNAR KRAJIN